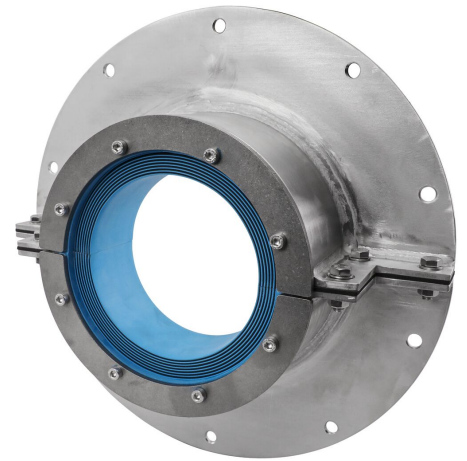




Sello Roxtec RS con SLFO/Ext

Sello de entrada para un solo cable o tubería.

El Roxtec RS con SLFO/Ext es un sello con casquillo para cables o tuberías individuales. El sello de entrada se compone de dos mitades con capas retirables, con lo que se puede adaptar a cables y tuberías de diferentes tamaños. El diseño del sello hace más fácil la instalación en torno a cables o tuberías existentes. El casquillo que se puede abrir cuenta con una ala ancha para cumplir con la distancia mínima al borde entre el perno y la abertura necesaria cuando se atornilla a estructuras no uniformes como el hormigón.



- Perfecto para renovaciones
- Se adapta a cables y tuberías de diferentes tamaños
- Versión que puede abrirse

Características del producto



Estanco al agua



Calificación contra incendios

Estructura de instalación



Hormigón

Tipo de montaje



Atornilladura

Calificaciones y certificados

Fuego

- E/EI rating according to EN 13501

Estanquidad

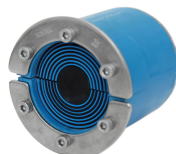
- Agua: 0,3 bar (constante)

Datos de los componentes de sellado

Componentes de sellado



Lubricante Roxtec



Sello RS



Kit de funda SLFO/Ext.

Para obtener información detallada, visite [roxtec.com](https://www.roxtec.com).

The product information provided by Roxtec does not release the purchaser of the Roxtec system, or part thereof, from the obligation to independently determine the suitability of the products for the intended process, installation and/or use.

Roxtec gives no guarantee for the Roxtec system or any part thereof and assumes no liability for any loss or damage whatsoever, whether direct, indirect, consequential, loss of profit or otherwise, occurred or caused by the Roxtec systems or installations containing components not manufactured by an authorized manufacturer and/or occurred or caused by the use of the Roxtec system in a manner or for an application other than for which the Roxtec system was designed or intended.

Roxtec expressly excludes any implied warranties of merchantability and fitness for a particular purpose and all other express or implied representations and warranties provided by statute or common law. User determines suitability of the Roxtec system for intended use and assumes all risk and liability in connection therewith. In no event shall Roxtec be liable for indirect, consequential, punitive, special, exemplary or incidental damages or losses.

The Roxtec products are offered and sold in accordance with the conditions of the Roxtec General Terms of Sales. The latest version of the Roxtec General Terms of Sales can be downloaded from <https://www.roxtec.com/en/about-us/about-roxtec/general-terms-of-sales/>

We reserve the right to make changes to the product and technical information without further notice. Any errors in print or entry are no claims for indemnity. The content of this publication is the property of Roxtec International AB and is protected by copyright.

This document was generated on: 2025-03-12